

RERA Reg. No. : **RAJ/P/2023/2431**
www.rera.rajasthan.gov.in



CENTURY 21
THE REAL ESTATE REVOLUTION



THE
CENTURY
elite

1/2/3 BHK Premium Apartment



284

1/2/3 BHK
APARTMENTS

THE
CENTURY
elite

1/2/3 BHK Premium Apartment

9500 Sq.ft.

MODERN
CLUB HOUSE

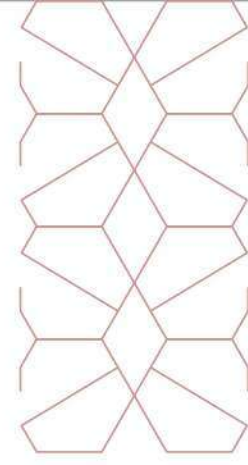
2660 Sq.mtr.

OPEN AREA



THE
CENTURY
elite

1/2/3 BHK Premium Apartment



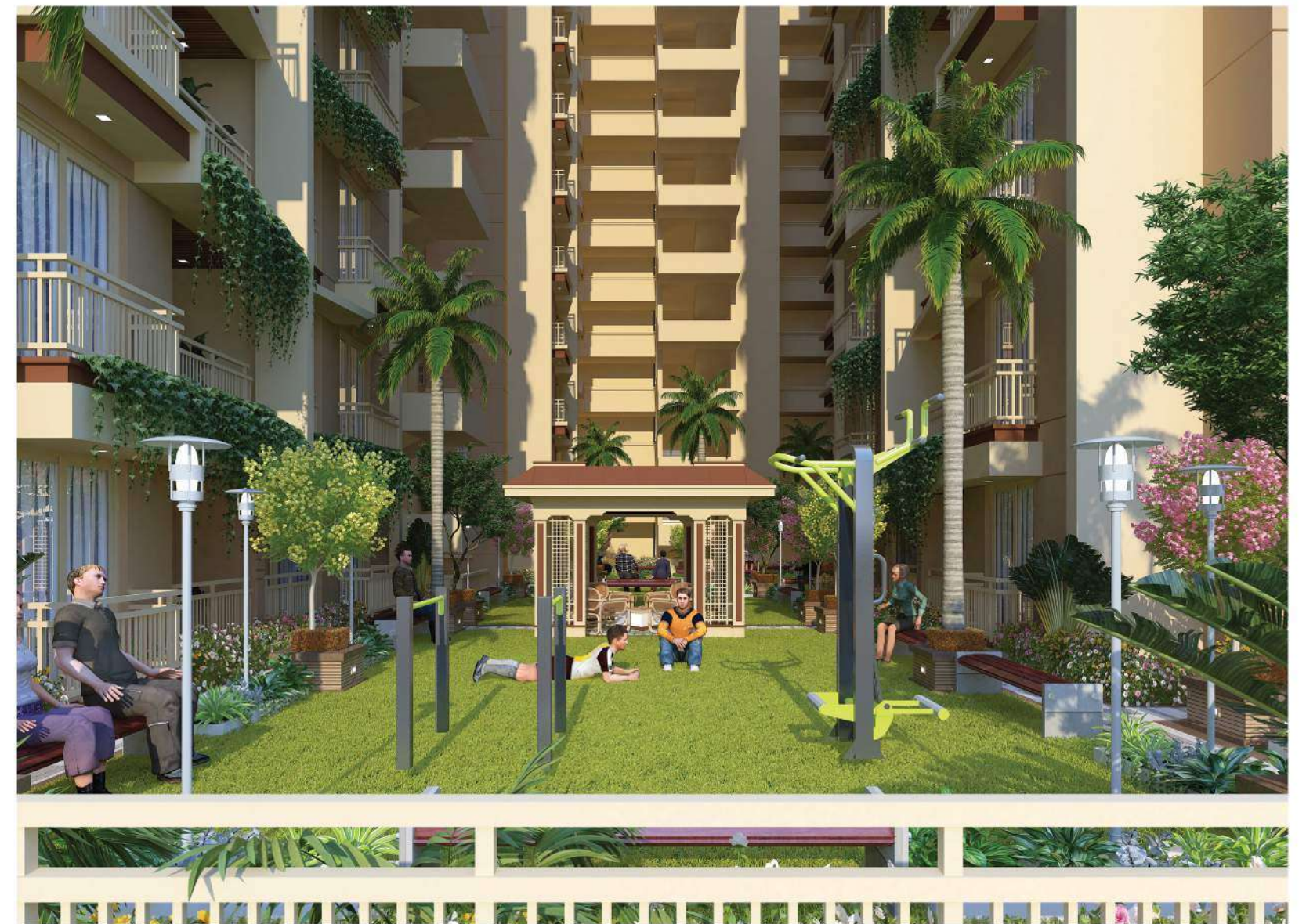
Experience
a life curated
for the elite

A life where you find solace yet create many memories with your family, where you find comfort and friendship in your neighbours, where you stay connected to prominent places, and where you unwind amidst lush greenery and modern amenities. Every detail has been meticulously designed in order for you to live an exclusive lifestyle. It is a life of elite, a life for the elite!



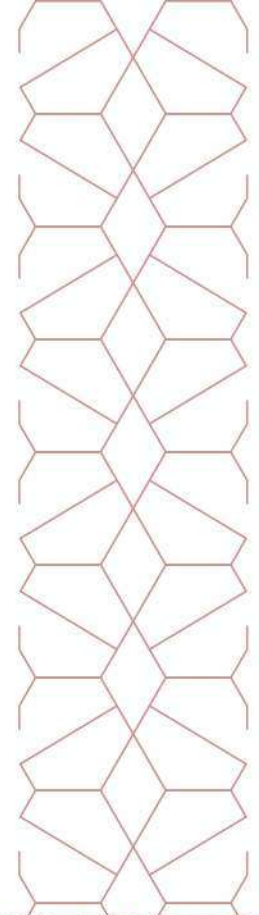
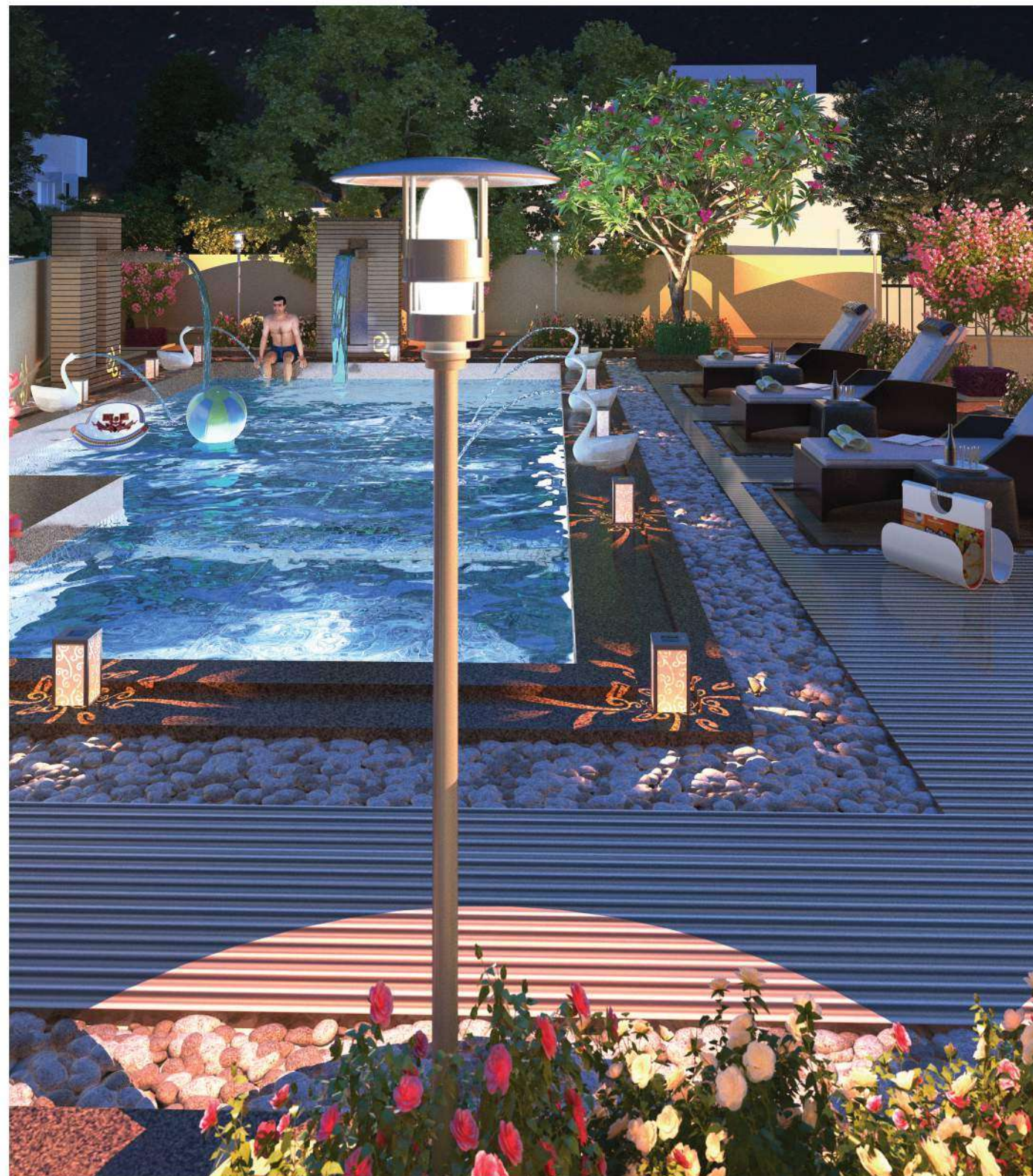
Where peace of mind is a state of mind

Every experience here is elevated when you are at peace. The Century Elite offer you a life wrapped in the bounty of nature that lets you spend quality time with your family and yourself. From exquisite landscapes and a swimming pool to a sitting area amidst lush greenery, Century Elite offers you a place like never before to unwind, rejuvenate, and revive your energy so you can live a harmonious life.



Find your paradise right where you live

Experience the joys of life in the midst of a hectic schedule, and at The Century Elite, it is possible. The aesthetically pleasing swimming pool surrounded by lush greenery will be your favourite place to relax, be alone, or even swim a few laps. Revel in the very essence of soulful relaxation!

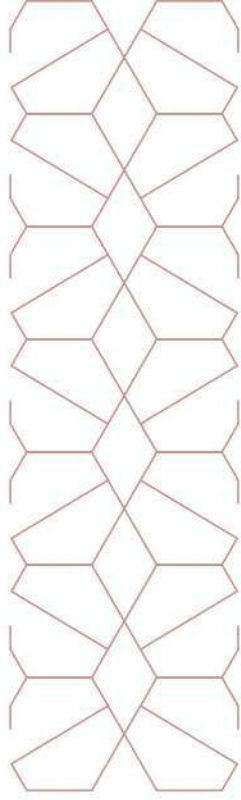




A DISTINGUISHED
WAY OF LIFE AWAITS



IMPECCABLE DESIGNS
FOR AN IMPECCABLE LIFE



State-of-the-art Club House for your good state of mind

When the inside has everything to indulge in, you wouldn't feel like stepping out of your home. The modern and exclusive Club House at Century Elite offers you the best in relaxation and fitness to keep your mind, body, and soul in perfect harmony. Be it the kids, senior citizens, or young adults, the magnificent clubhouse has everything one needs to indulge in world-class amenities handpicked only for the select few.



SWIMMING POOL



CHESS & CARROM BOARD



TABLE TENNIS



BILLIARDS



OPEN PARTY AREA



LIBRARY



EV CHARGING POINT



SENIOR CITIZEN AREA



GYMNASIUM



KIDS PLAY AREA



JOGGING TRACK



3-TIER SECURITY



RESERVED CAR PARKING



YOGA DECK

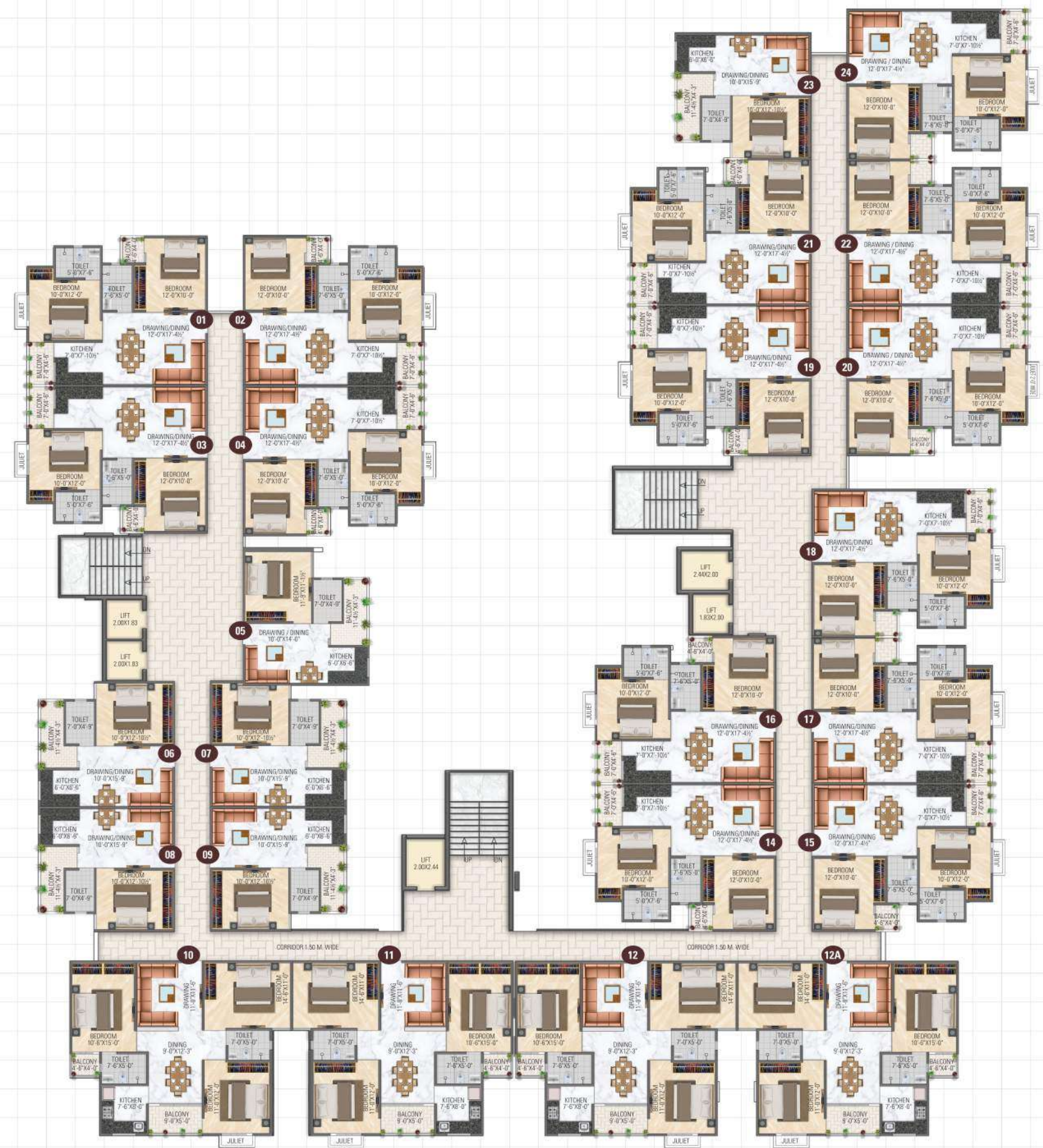


STILT FLOOR PLAN



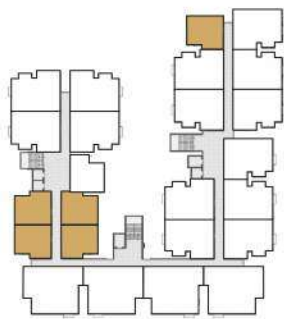
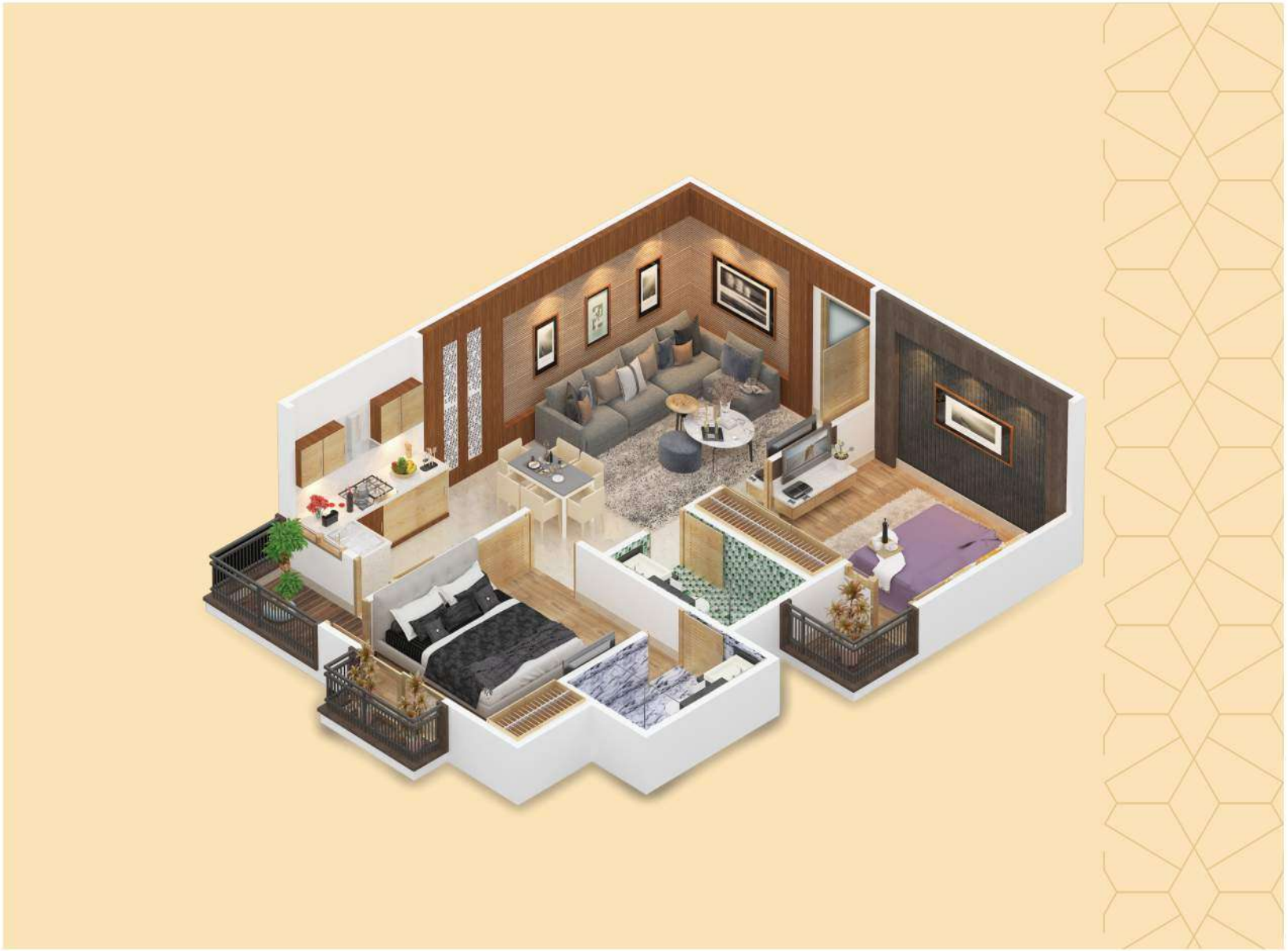
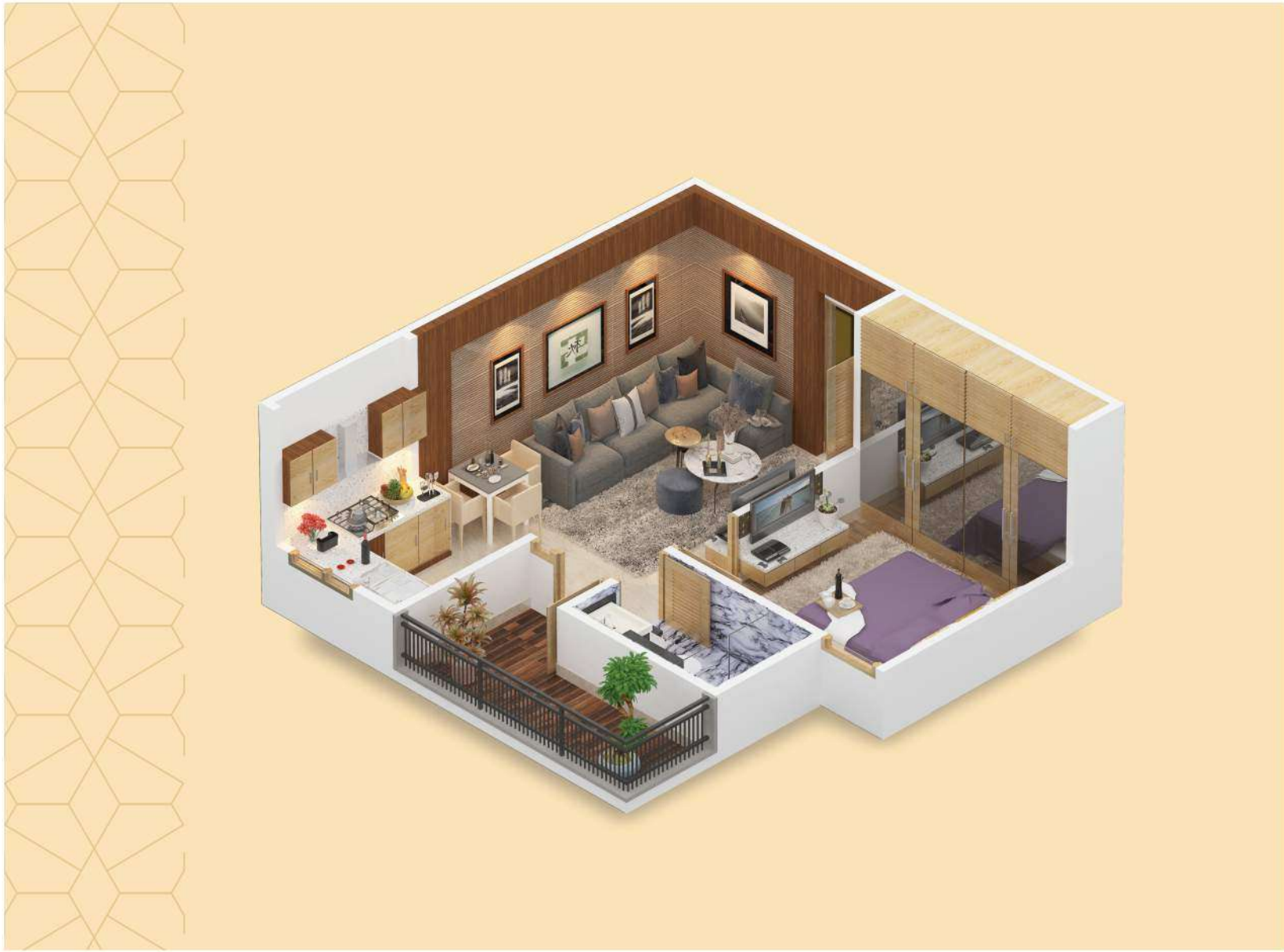


PODIUM FLOOR (1ST FLOOR)



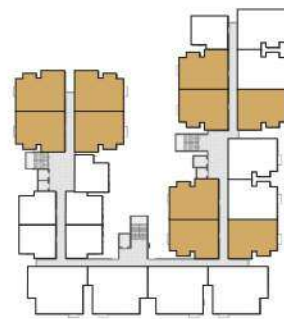
TYPICAL FLOOR PLAN





1 BHK

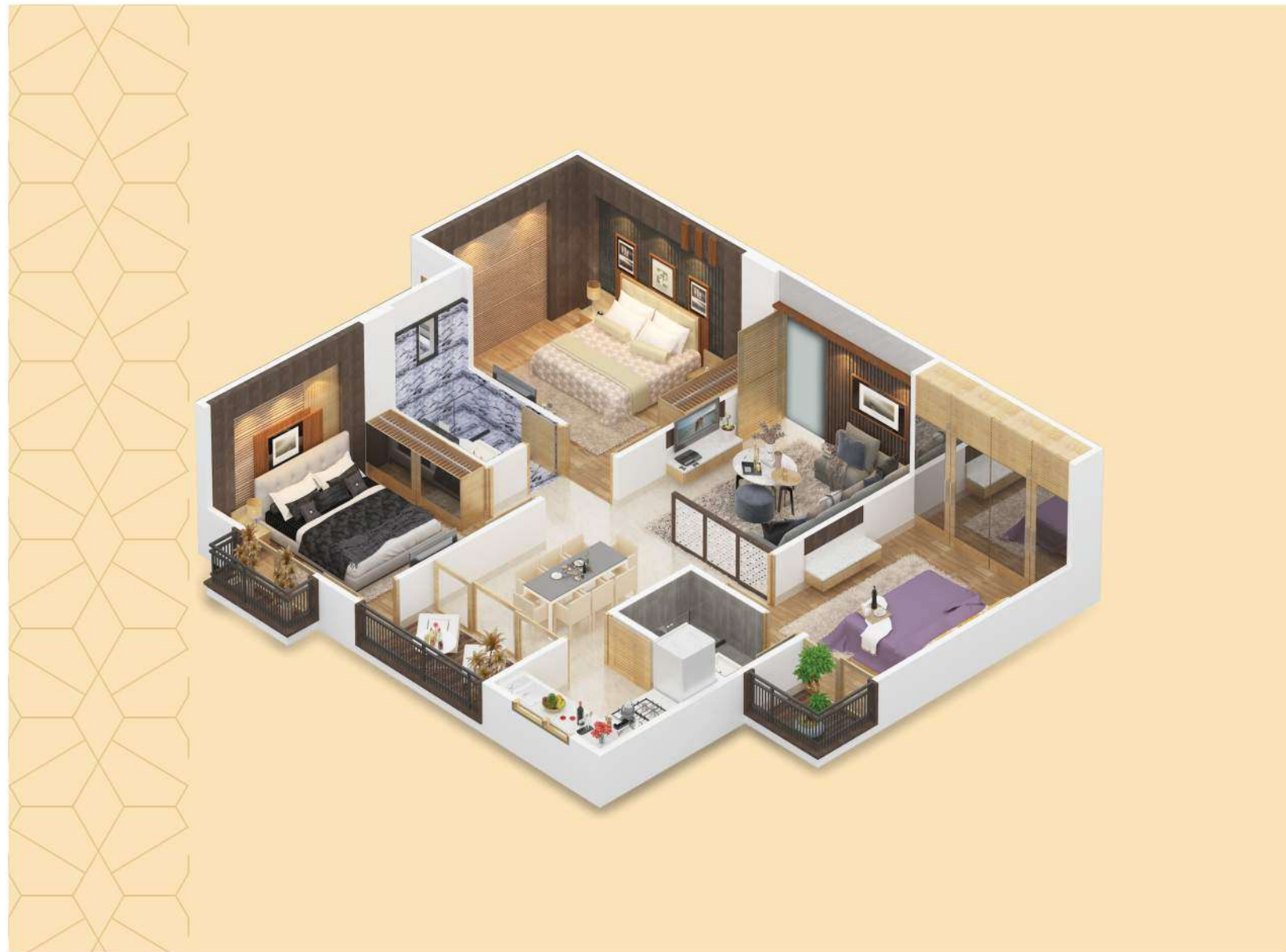
Saleable Area
595 Sq.ft.



2 BHK

Saleable Area
947 Sq.ft.





SPECIFICATIONS

STRUCTURE

- Energy-Efficient & Eco-Friendly Design
- Earthquake-Resistant RCC Framed Structure
- Emergency Exit Provision through an Extra Staircase

KITCHENS

- Stainless Steel Sink
- Granite Working Counters
- 2 Feet Tiles Dado above the Counter
- Provision for Geyser, Water Purifier & Chimney

WATER SUPPLY

- Solid Waste Disposal Plant
- 24 X 7 Water Supply through Overhead Tank
- Underground Water Tank for Additional Storage
- Rainwater Harvesting System to Recharge Groundwater

APARTMENTS

- Premium Vitrified 2x4 Tiles Flooring
- POP Finish on all Walls & Ceilings
- Designer Fittings on Doors and Windows
- Premium Quality Paint on Walls & Ceilings
- Premium Quality Designer Laminated Flush Doors
- UPVC / Aluminum Windows with a Track System

WASHROOMS

- Ceramic Tiles Flooring
- Premium Quality CP Fittings
- Premium Quality Sanitary Ware
- Extended Wall-Hung/Floor-Mounted WC
- Designer Ceramic Wall Tiles up-to Door Height

SECURITY SYSTEM

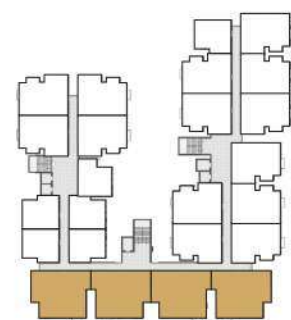
- Intercom/EPABX Facility
- Round the Clock 3 Tier Security
- 24 X 7 CCTV Surveillance System
- Access Control System at the Main Entrance

ELECTRICAL

- Premium Quality Wires & Cables
- Premium Quality Modular Switches & Accessories

COMMON AMENITIES

- 5 High-Speed Elevators
- Designer Entrance Lobby
- Power Backup in Common Areas
- Separate Garden with Kids Play Area.
- Provision for EV Charging
- Main Entrance Gate with Separate Entry & Exit Driveways
- Indoor Games Room consisting of Pool, Table Tennis, Carrom & Chess Etc.
- Well-Equipped Clubhouse consisting of Swimming Pool, Gymnasium
- Separate Kids Pool



3 BHK

Saleable Area
1309 Sq.ft.

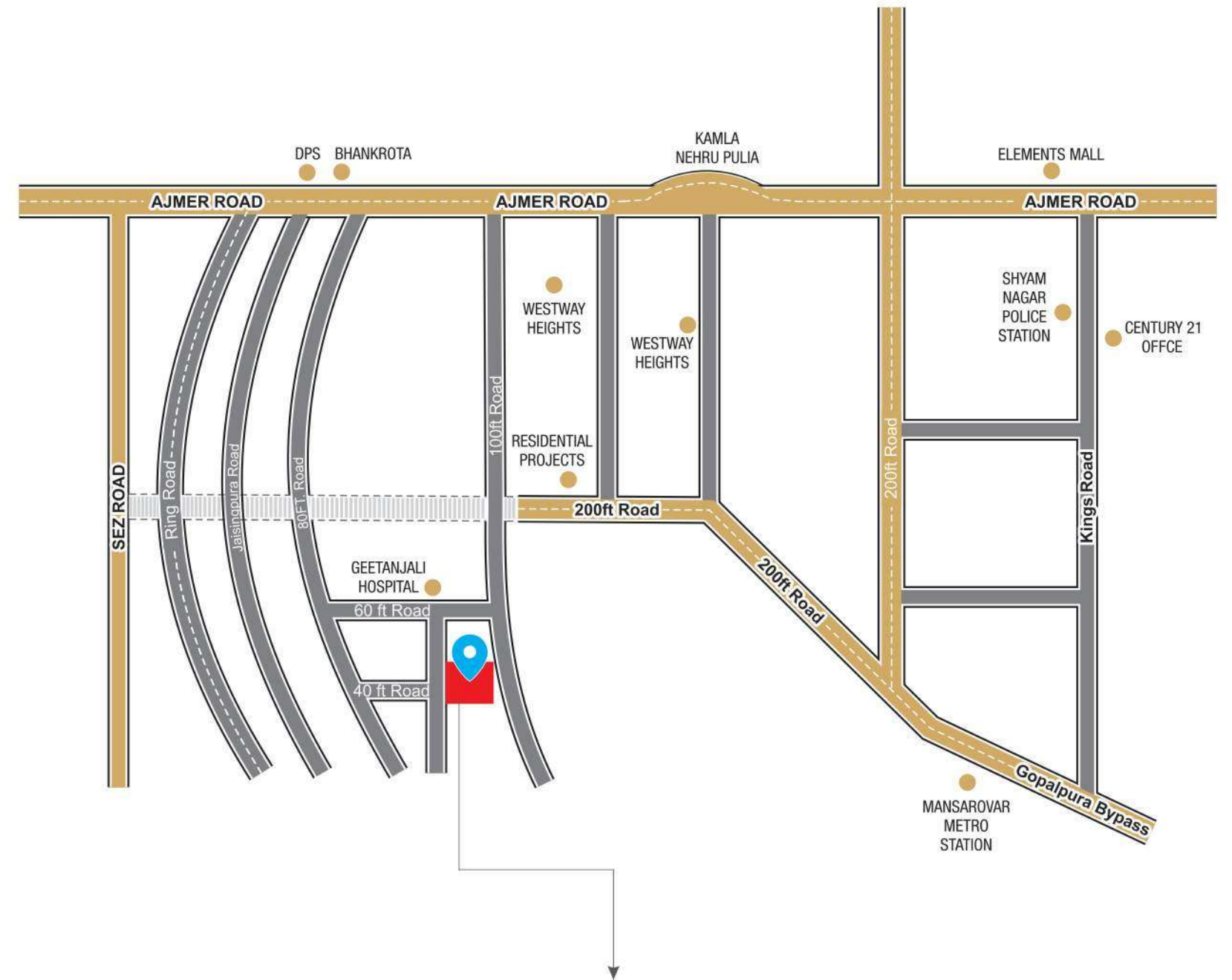




The Group



Century 21 is a well-known and respectable real estate company. Century21 has a lot of experience in this field, and we know who is looking to buy a home. We are working for you as a real estate business with local knowledge, which offers you an advantage in finding and presenting your home. It has carefully curated a culture of invention, dedication, and commitment to values. The company assures its quality and standard to make its customers' investments worthwhile. Century21 thinks that a house is more than just four walls. It's an emotion, a life experience, and Century 21 always considers that.



THE CENTURY elite

1/2/3 BHK Premium Apartment

Distance Chart

Hospitals	.1 km	Hotels	3 km
Schools	2 km	Jaipur Junction	13 km
Shopping Center	3 km	Airport	15 km
MSEZ	6 km	Metro Station	6 km

Scan QR Code for Location



Near Upcoming Medical Hub,
Mansarovar Ext. Ajmer Road,
Jaipur, Rajasthan 302026



A PROJECT BY : NEELKANTH HOMES

INITIATED BY :
CENTURY 21 BUILDERS & PROMOTERS PVT. LTD.

REGISTERED OFFICE : 1st Floor, Plot No. 262, Nirman Nagar-C,
Opp. Shyam Nagar Thana, Kings Road, Jaipur-302019, Rajasthan
E. : info@century21jaipur.com | W. : www.century21jaipur.com

Scan
QR Code
for Website



Disclaimer : This printed material does not constitute any form of agreement and all the purchases shall solely be governed by the terms of the agreement for sale. All finishes are subject to change at the discretion of the Developer and / or the Architects. The images used in this brochure are for illustration purpose only whereas the rendered images are close to actual.